

# Technical Datasheets



## R&M WM Global Outlet

## WM Global Outlet

These outlets are designed for flush installation on walls or ducts. The installation cables can enter through the side or from the rear. The mounting plate supplied with each outlet kit allows wall-mounted installations with 60 mm mounting track or 56 mm mounting distance.

### Standard:

IEC 60603-7: Electrical Characteristics for Telecommunication Outlet

### In-House Testing after Standard:

IEC 60068-2-2: Dry warm for outlet

IEC 60068-2-1: Cold

### In General

Material : PC+ABS  
Colour: Weiss / RAL9010

### Measure

Width 80 mm  
Length 80 mm  
Height 67 mm

### Technical Datas

Environment temperature -10°C...80°C

### Result

Press out force: 87.28 N = 8.9 Kg

### Matching Modules

#### Connection Module

Cat.5e s/u, Cat.6 s/u

#### R-Numbers:

R925370/ R925371 /R304325/ R304326/ R302372/ R302373/ R304327/ R304328

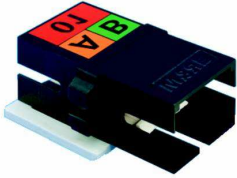


**FO Module:**

SC-RJ; E-2000TM

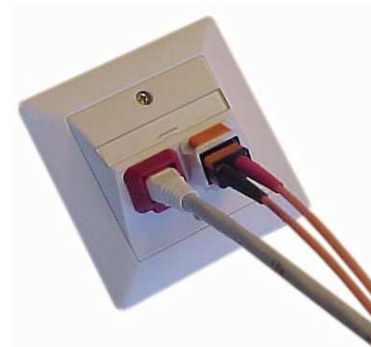
**R-Numbers:**

R308461 /R308459 /R306882/ R306878/ R308889



### Matching Accessories

**R&M Security System**



**R&M Environment System**



**Labelling Sheet**

**R312102**

### Dimensional Drawing

